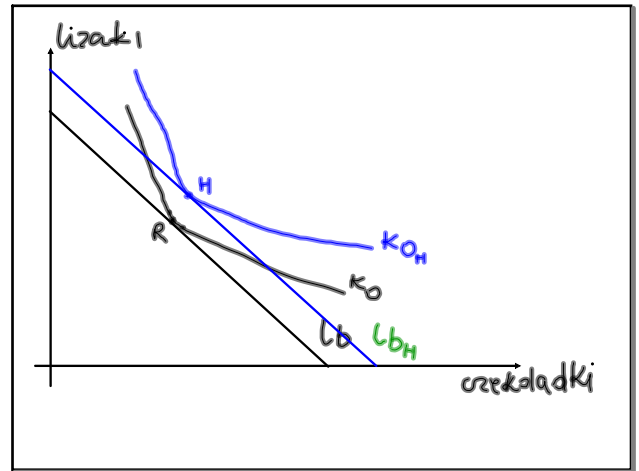
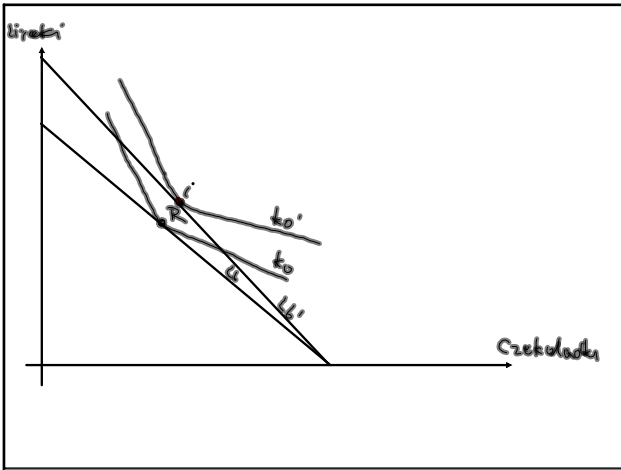


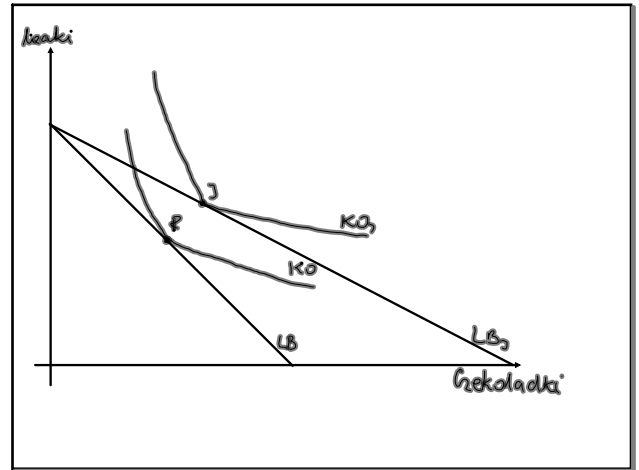
lis 10-08:09



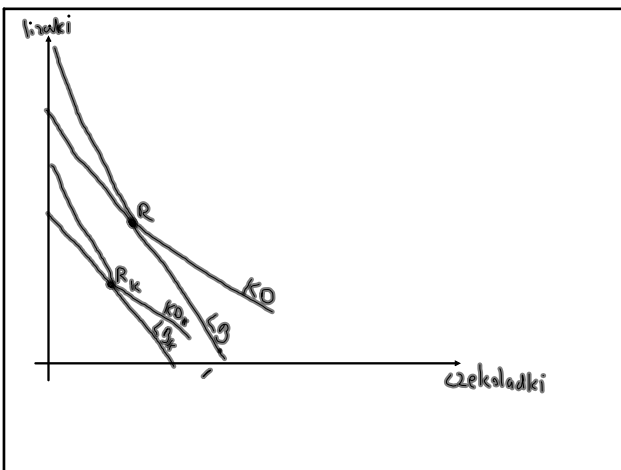
lis 10-08:10



lis 10-08:10



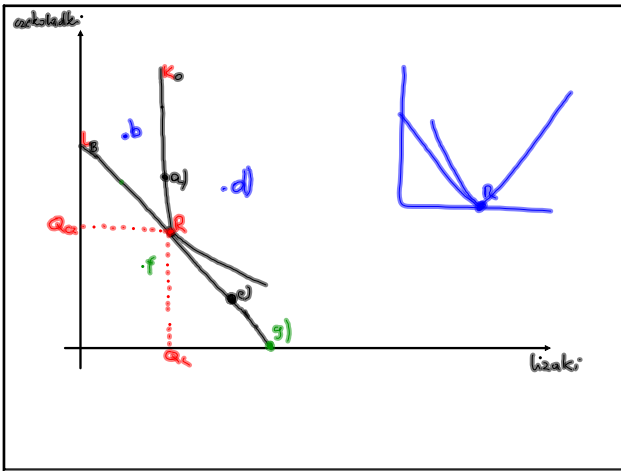
lis 10-08:10



lis 10-09:03

5.2
 a) $P_{spr} - 100 : 10 = 10zł$
 $P_{spr} - 100 : 5 = 20zł$
 $20zł \quad 100zł = 20zł = 80zł$
 $80zł : 20zł = 4$
 $100zł = 8 sztuk \quad 100 : 8 = 12.5$
 $75 : 20 = 3.75$

lis 10-09:12



lis 10-10:08

a) $\frac{100}{10} = 10$ cena soku z czarnej porzeczki - 10zł

$\frac{100}{5} = 20$ cena soku pomarańczowego - 20zł

b) $(x, y) = (2, y)$ 2; 4

$100 = 20 + 20y$

$20y = 80 \quad | :20$

$y = 4$

lis 10-13:06

c) $\frac{100}{8} = 12,5 \text{ zł}$

$2 \cdot 12,5 = 25$

$100 - 25 = 75$

$75 : 20 = 3,75$

$(2; 3,75)$

lis 10-13:16